

## CASE STUDY

**Sector:**  
Student accommodation

**Project:**  
The Elements, Sheffield  
Hallam University

**Client:**  
Victoria Hall Management Ltd  
(VHML)

**Approved Window  
Contractor:**  
Polar Windows (Chesterfield)  
Ltd

**Product:**  
Profile 22 Flush Tilt & Turn  
Window

**Location:**  
Sheffield

## High quality student accommodation benefits from Optima windows

Profile 22 Flush Tilt & Turn Windows were chosen for a £24 million project to build new accommodation for 735 students at Sheffield Hallam University.

Founded 29 years ago, Profile 22 Approved Window Contractor Polar Windows has a strong commercial division and works with some of the biggest names in the construction industry. One of Polar's clients, North Midland Construction, appointed it to supply and install the PVCU windows required in a £24 million project to build accommodation for 735 students at Sheffield Hallam University.

The client was Victoria Hall Management Ltd (VHML), a specialist UK developer and operational manager of student accommodation. The contract was to build The Elements, an 11-storey building containing a mix of 4, 5 and 6 bed cluster flats plus self-contained flats, with all bedrooms having an en suite bathroom and sharing a kitchen and dining area.

As well as the flats, the building contains a gym, cinema room, quiet study area, common room TV and pool table and a private outdoor courtyard. The Elements will be managed by Host, the student facing brand of VHML.

Groundworks for the project began in January 2017 and the building was completed in August 2018.

### Optima windows deliver the results needed

While aluminium windows were specified for the building's street facing elevations in order to meet planning requirements, Profile 22's high performance Flush Tilt & Turn Windows in Smooth Anthracite Grey were specified for the internal courtyard. Purposely designed for medium and high-rise buildings, the sash on the Flush Tilt & Turn Window is neatly positioned inside the frame of the window to create an elegant and sleek 'flush' appearance that means it is a cost-effective alternative to aluminium.



Polar Windows use of the Flush Tilt & Turn Windows on the internal courtyard elevations meant that North Midland Construction was able to value engineer the project and deliver value back to the client, Host.

As well as helping North Midland Construction value engineer the project, Profile 22's Flush Tilt & Turn Window delivered a wealth of other benefits. It has a maximum opening size of 1450 x 2300mm and offers exceptional performance because it has an air permeability value of 600Pa, water tightness value of 600 Pa and wind resistance value of 2400Pa. It is also Secured by Design accredited and meets PAS24:2016 standards for security.

**A complex, demanding installation requiring considerable expertise and experience**

Several factors meant that installation of the windows was a complex undertaking.

Firstly, the project had a tight timescale so that it could be completed in time for the start of the 2018/19 academic year. Shaun Daysh, General Manager at Polar Windows, commented: "We needed to work closely with North Midland Construction and liaise carefully with all the other trades on site to ensure installation proceeded smoothly and in a timely fashion."

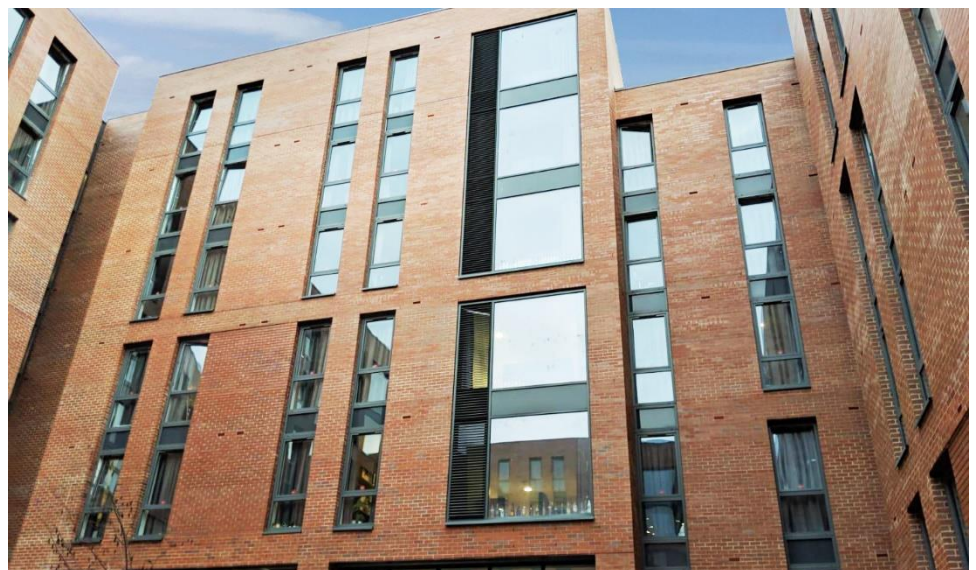
The building is in a busy area of Sheffield, just a 10-minute walk from the city centre, which meant the build needed to be carefully managed to avoid causing unnecessary disruption to city centre traffic. Shaun said: "Every aspect of work on site, including deliveries and the use of the telehandling equipment required to position the windows in place needed to be meticulously planned."

Throughout the project Polar Windows worked closely with Profile 22. During the tendering process Profile 22's technical team worked with Shaun to provide CAD drawings and additional technical support. During the construction phase, Shaun says Profile 22's support was invaluable. "Profile 22 had an excellent understanding of what was required. On a project of this scale, we didn't want to have the stock in one delivery. We called off what was required in several batches, which made capacity planning at our manufacturing facility much easier."

**An impressive, high profile result**

The end result is an eye-catching building that has regenerated a neglected site in Sheffield and is a powerful addition to the Sheffield city landscape. Shaun comments: "It was a good project to be part of and we are delighted with the way it looks."

**For more information on the Profile 22 Flush Tilt and Turn Window, please visit [www.profile22.co.uk](http://www.profile22.co.uk) or call 01952 290910**



[www.profile22.co.uk](http://www.profile22.co.uk)