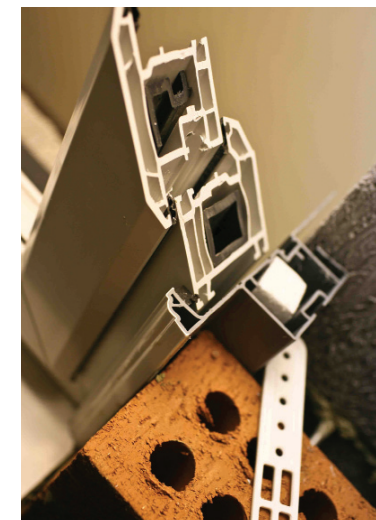


winfast™

The new, revolutionary former, fixer and cavity closer system from Profile 22

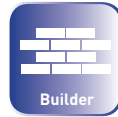
Complies with all building regulations including Document L



Winfast - meeting all the new build market needs

Winfast is the new revolutionary cavity closer and former system from Profile 22. What sets it apart is the speed and ease of installation, saving you money on site. Unlike other cavity closers **Winfast** allows you to install windows from the inside thanks to its unique fixing system (patent applied for).

Versatile and cost-effective the **Winfast** cavity closer system and frame former gives you all the flexibility of frame position and cavity widths you require on site.



Builder friendly

Winfast is a made to measure system designed to drop straight into the cavity without adjustment on site. The sub frame acts as horizontal and vertical damp proof membrane and can be used as a former as brickwork is built up, held in place with specialist brick ties and PVC-U brace and shoes for stability. Window and door frames can then be easily fixed in minutes from the inside once all other building work is complete.



Build in the closer/fixer, with or without headvent



Specifier friendly

It's pioneering 98% recycled content helps future proof it against further changes in legislation.



Slide in the window from inside the property.



Installer friendly

Winfast allows you to install windows in minutes from the inside. No need for scaffolding (or waiting around for scaffolders!) and no special brackets that need fixing to frames – The secret is a unique locking system (patent applied for) that fits the frame in place immediately. Once fitted, the frame only requires sealing under the cill and to the brickwork at the jamb head.



Lock in place using the patent applied for **Winfast** cams. The window is now fitted & secure.



Tried and tested

Winfast is setting the standard for new build cavity closer systems. BBA approved, it offers full compliance with building regulations including Document L.



Universal appeal

Designed to work just as effectively with timber and PVC-U window and door frames **Winfast** can be installed in cavities from 75mm right through to 100mm.



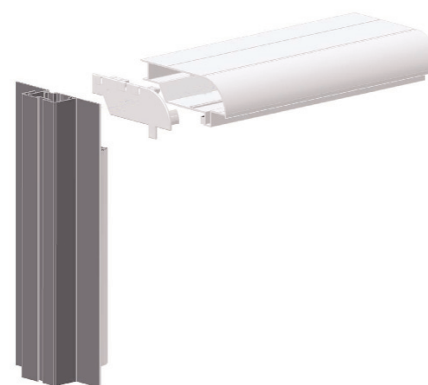
Fabricator Friendly

Winfast is supplied with insulation already in place so frames need only be square cut to size and then mechanically jointed with specialist corner cleats.

No cavity closer helps install windows quicker

Specialist ventilation

Head vent ensures full compliance with Building Regulations Approved document, F1 2006 Means of Ventilation.



Key product features

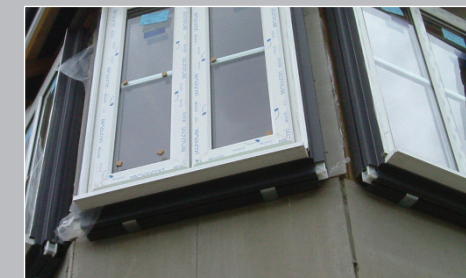
- BBA approved certificate no. 01/3827
- Window and door former for brick and block construction
- Allows windows to be fitted from the inside
- Ensures compliance with building regulations
- Head vent provides overhead ventilation to Approved Document F
- Designed for cavities 75mm to 100mm
- Can be mechanically jointed
- Acts as a horizontal and vertical DPM
- 98% recycled content
- Can be used with any PVC-U or timber window or door system

Covering more cavity options as standard

Cavity Size	Cavity – jamb position B	Cavity – sill
75mm		
80mm		
90mm		
100mm		

Twist and lock cams hold frames in place immediately

Simple, quarter turn fasteners – no other fixings required.



For more information
please contact us:

Profile 22 Systems
Stafford Park 6, Telford
Shropshire, TF3 3AT
T : 01952 290910
F : 01952 290460
W : www.profile22.co.uk
E : specifier@profile22.co.uk

Patent applied for



Printed on 250gsm Take 2 offset 100% recycled and chlorine free

PROFILE 22 is an international PVC-U profile system supplied to local independent manufacturers and installers who contract to install windows, doors and conservatories. PROFILE 22 SYSTEMS cannot be held accountable for manufacture or installation by independent companies. All information in this publication is provided for guidance only and is given in good faith. As it is company policy to continually improve products, methods and materials, changes of specification may be made from time to time without prior notice. This statement does not affect your statutory rights. © PROFILE 22.

Part of the Epwin Group.